

Parcel: 44-01313-000

Year: 2024

LARRY LINDBERG

Tuscarawas County Auditor | Tuscarawas County, Ohio



SUMMARY

Table with property details including Deeded Name, Owner, Tax District, School District, Neighborhood, Location, CD Year, Acres, Land Use, Class, Subdivision, Legal, Routing Number, and Sales Amount.

VALUE

Table with columns for District, Land Use, Appraised, and Assessed values for Land, Improvement, CAUV, Homestead, OOC, and Taxable.

CURRENT CHARGES

Table with columns for Full Rate, Effective Rate, Qualifying Rate, and a breakdown of charges by Prior, First, Second, and Total.

TRANSFER HISTORY

Table with columns for Date, Buyer, Conveyance, Deed Type, Sales Amount, Valid, and # of Properties.

LAND

Table with columns for Type, Dimensions, Description, and Value for different land parcels.

DWELLING

Table with columns for Card 1, Style, Stories, Rec Room Area, Finished Basement, Rooms, Bed Rooms, Dining Rooms, and various features like Heating, Cooling, Grade, Fireplaces, etc.

SKETCH

Table with columns for Card 1, Floor, Floor Area (ft²), and Living Area (ft²).

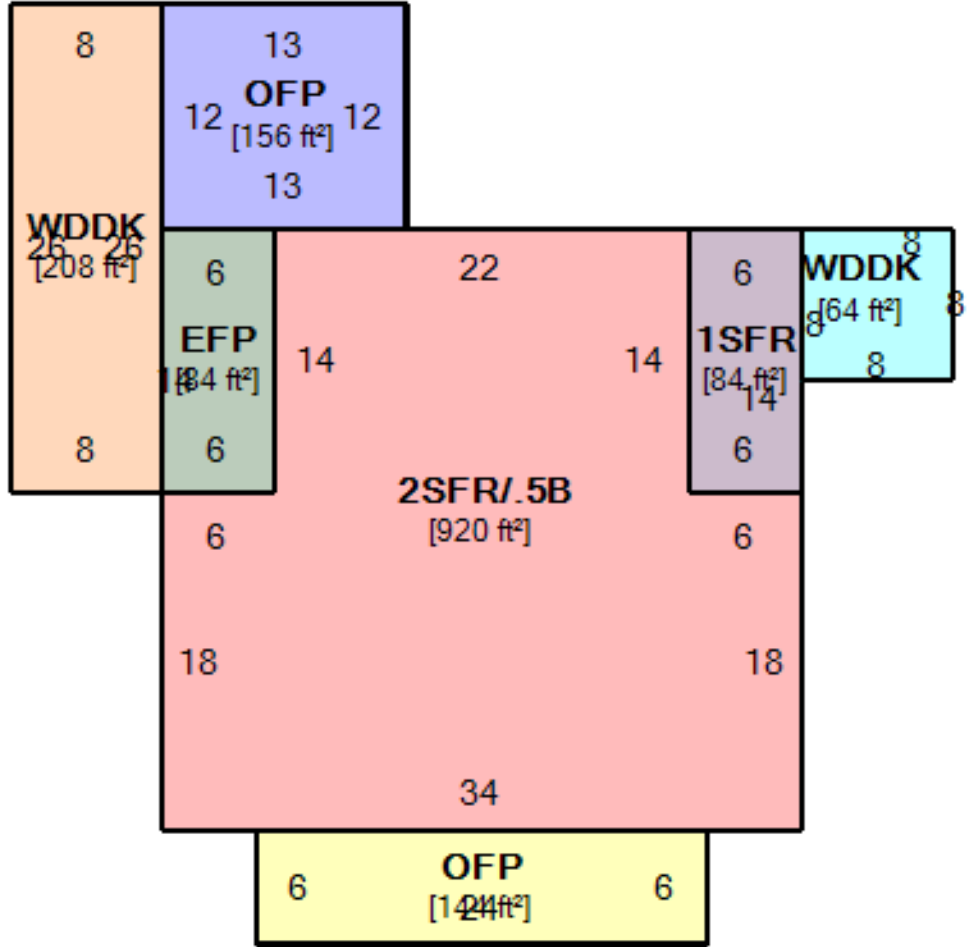
ID	Description	Size
A	2SFR/.5B (2 STORY FRAME / .5 BASEMENT)	920
B	OFP (OPEN FRAME PORCH)	144
C	EFP (ENCLOSED FRAME PORCH)	84
D	OFP (OPEN FRAME PORCH)	156
E	1SFR (1 STORY FRAME)	84
F	WDDK (WOOD DECK)	208
G	WDDK (WOOD DECK)	64
1	DCBG-DETACHED CONCRETE BLOCK GARAGE	720
10	CANOPY	80
11	SHED	120
12	MOBILE HM-MOBILE HOME	825
3	SHED	288
6	DPG-DETACHED POLE GARAGE	1,792
8	SHED	120
9	SHED	80

10

9

8

6 12



3

1

11